

INTEGRITY

PEARL OF THE SEA



MODEL 550CE SEAWORTHY COMFORT AND LUXURY

Import: Swanta-yachting VOF Mozartlaan 15G 1217CM Hilversum The Netherlands

www.integritytrawlers.nl Email: info@integritytrawlers.nl Tel. +31(0)627890535

INTEGRITY

PEARL OF THE SEA



INTEGRITY

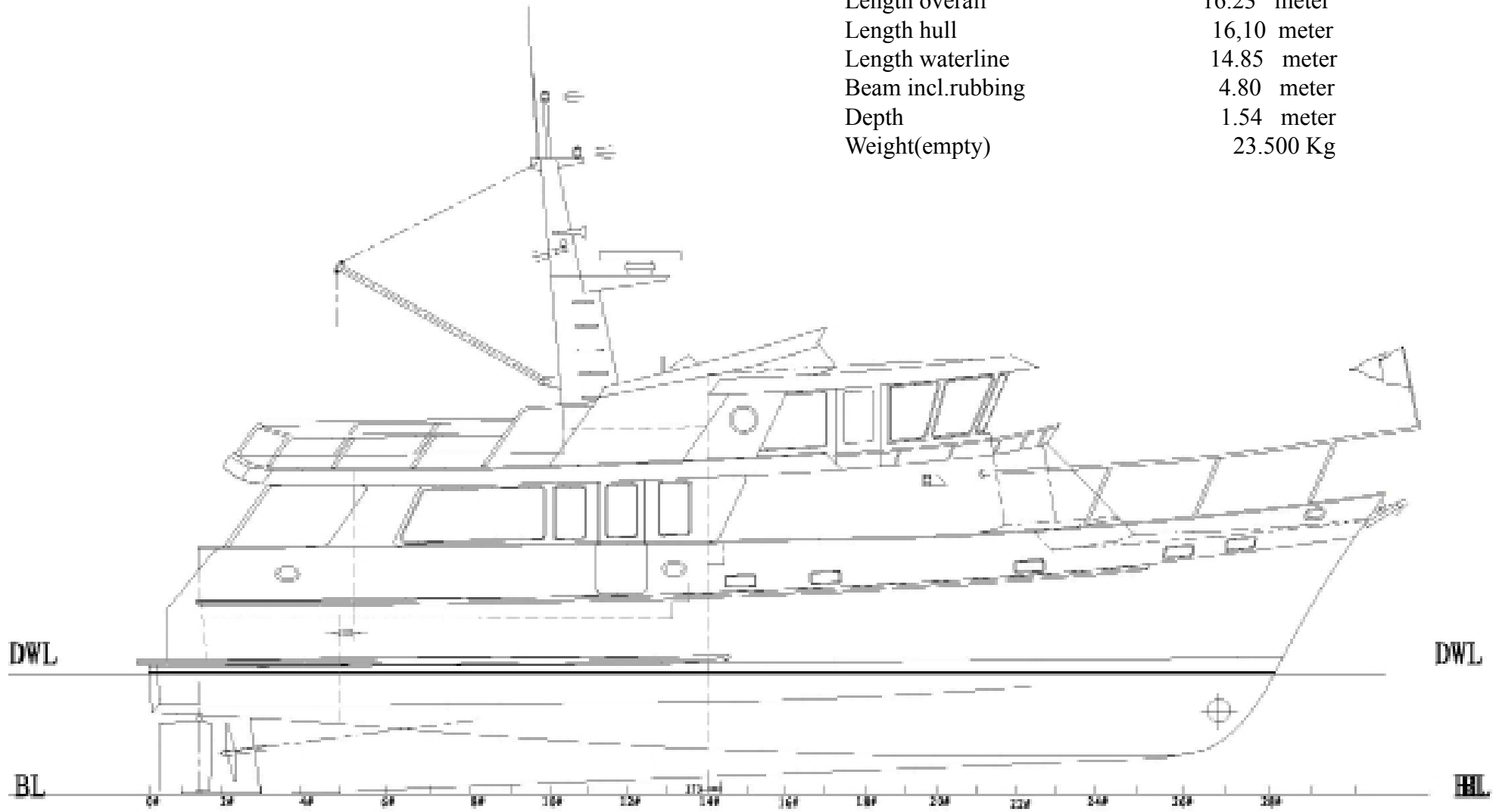
PEARL OF THE SEA



550 CE

550CE COASTAL EXPRESS

Length overall	16.23 meter
Length hull	16,10 meter
Length waterline	14.85 meter
Beam incl.rubbing	4.80 meter
Depth	1.54 meter
Weight(empty)	23.500 Kg



SPECIFICATIONS 550CE

Length overall	16.23 meter
Length hull	14.98 meter
Length waterline	14.85 meter
Height above waterline	7.37 meter
Minimum height	4.40 meter
Beam	4.80 meter
Draft	1.54 meter
Weight	23,5 ton
Fuel	3120 liter
Water	1040 liter
Maximum speed	12 knots
Engine Cummins QSC8.3 , 2600RPM, 540 PK	
Construction; full polyester hull with cored superstructure and 2 vinylester layers.	
* Darkblue hull in gelcoat	

MECHANICAL EQUIPMENT

3 pcs 12Volt 9000 ltr bilgepumps,float switches
All seacocks with double s/s hose clamped
Manifold fuelsystem
Fueltanks welded alu with sumps,sight gauge and inspection ports
Manual bolgepump
Jabsco 12 V pressurized fresh water
Engineinstruments each control station
***Electronic enginecontrol**
Engine overheat&low pressure alarms
Engine room blowers&air intake vents
Wet exhaust
PYL stuffing box shaft seal
Polyester drip pans under engine
Rudder-fibreglass blades with s/s shafts
*** Dual Racor fuelfilters**
Raritan hotwaterboiler,75 liter
*** Maxpower bowthruuster CT 165 24 V**
316 s/s prop shaft
Seastar hydraulic steering system

Watertank welded s/s steel
Seacocks on all thru hul at or below waterline
Superiot engineroom sound proofing material
ZF 280A transmission reduction 2,43:1
Propellor,4 blades bronze 820x660mm
*** Ratchie 5"Compass pilothouse&flybridge**

HARDWARE

3 windscreen wipers and washer
4 steps folding s/s swimladder
***Extra s/s ladder SB exit(removable)**
Alu boom on mast with 12V elektrik winches
Alu radarmast with deck illumination
Interior handrail for stairs in s/s brushed
Halogen ceilinglights 12 V
Bow & stern staffs
Step plates in in all hull doors
Transom hot and cold freh watershower
Hatch on foredeck
Elektric horn
Garelick adjustable helm seat
Halogen readinglights in all cabins 12V
Maindeck ceiling lights starboard and aft 12 V
International navigation lights
Engineroom and Lazarette with overhead lights
Railing 1.25 inch s/s steel
S/s rub rails
Windows kitchen sliding
Aft sliding double doors with lock
Locks on all doors
Pilothouse doors with clamplocking
All windows in rubber
6 Cleats all in s/s steel
*** CQR SS anchor, 50 meter 12mm chain**
*** Muir 2500 electric anchorwinch 24 V**

ELEKTRIC SYSTEM

*** Illumination under the beds and windows**
Integrated AC/DC voltmeters

Swichpanel with CE appoved fuses with check-lights, switches all with backlights behind doors with glasswindow
3 pcs 200 A batteries in polyester boxes
Engine batteries parallel for starting
*** Charger 3 fase smart,24 volt**
Charger/inverter12V Victron Phoenix12/2000.
Wiring to be color coded&numbered
Engine hourmeter
Ship to shore 30A dockside inlet fitting
*** Radio/Dvd +stereospeakers in each cabin**
220V outlets in kitchen and all other area's
Onan generator 7.5KW 220V AC 50 HZ
*** Webasto heating and Eberspracher heating in all cabins(4)**

FLYBRIDGE

L settee to port with fixed table
220 Volt AC outlet
26 inch s/s steering wheel Destroyer
DC 12 volt outlet
Non-skid painted deck
Clear lexan windows
Storage under seating
Storafe under sink
Radarmast with boomwinch and cable electric
Vinyl cushions with foam@mesh backs
***Canvas cover seating/helmchair/instruments**
***VHF 240(pilothouse)**
*** 2e VHF flybridge**
*** VHF antenna**

Helm station fwd to starboard
Hot/cold freshwater sink
* **Biminiframe met canvas**

DECKS

Decks to be molded in non skid
Hatch to lazarette with gas stay and ladder
Caprails fiberglass painted or gelcoat to the style of the hull color

SALOON

All furniture in teak
Bar with bottle storage
H/L table as option
Hatch access with ladder to engine room
Headliner of white acoustic vinyl
Access doors starboard & aft
Overhead lights in 12 V halogen
* **TV with satellite receiver decoder**
* **Teak floor and holly sole**

PILOTHOUSE

* **26 Inch Destroyer teak steering wheel**
Garelick helm chair
Console for electronics
L shape dinette converts to berth
Chart storage

GALLEY

12 Volt halogen overhead
Exhaust blower
Drawers and cabinets

* **Fridge drawer**

Fridge 12V/220AC with separate freezer
Trash cabinet
Electric 3 burner cooking
* **microwave/steam oven**
S/s double sink with cober@single lever faucet
Teak galley unit
Teak floor holly sole
White formica top

MASTER STATEROOM

Bed 150x200cm with drawers underneath
Wardrobe cedar lined with autolight
Halogen overhead lights and reading lights
Headliner of white acoustic vinyl
Mirror
Teak furniture and bulkheads
* **Radio/DVD player**
* **Teak floor with holly sole**
* **Escape hatch to pilothouse**

GUESTCABIN FORWARD

Bed queensize with drawers underneath
Wardrobe cedar lines with autolight
Halogen headlights and reading lights
Headliner of white acoustic vinyl
Teak furniture and bulkheads
Teak floor with holly sole

2ND GUESTCABIN

2 single beds above each other queen size
Wardrobe cedar lined with autolight
Halogen headlights and reading lights
Headliner of white acoustic vinyl
Teak furniture and bulkheads

HEADS

246 liter holding tank with Y valve with macerator
Jabsco pump, deck discharge outlet, remote display in head.
220 V outlets covered
Exhaust blower
Separate shower with glass door
Automatic drainage system
Single lever shower & sink H&C water faucets
Halogen ceiling lights
Jabsco designer electric toilets
Closets
Mirror
White FRP walls
Sink in white formica

MICELLANEOUS

Hull reinforcements pads for active fin stabilizers
Emergency tiller
Teak trim, min. 5 coats of varnish
Antifouling bottom paint
Owners manual
All drawers lock type

CE-categorie-B

INTEGRITY
PEARL OF THE SEA

OPTIONS

AGM batteries 150A/200 A
Corian finish in kitchen ,heads and showers
Cruisair aircro
Deckwashpump fresh water
Deckwashpump saltwater at anchor
Upgrade to 13.5 Kw Onan generator
Sharp LCD TV 38 cm in, master bedroom
Leather upholstery in saloon/pilothouse
Maxpower CT 165 24 V sternthrustrer
Naiad stabilizers type 174
Oil changingsystem

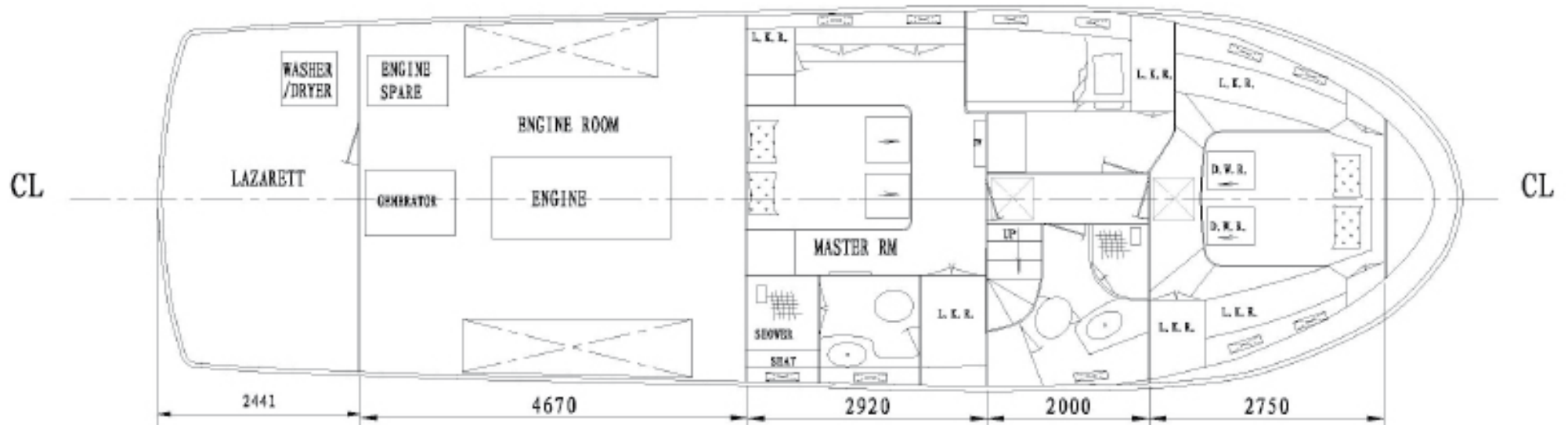
Raymarine elektronik
2xE120 plotters
4KW open radar
Raystar 125 GPS antenna
TV antenna 45STV
Depthsounder DSM 300
Cam 100 camera reardeck
Cam 50 camera engine room
Autopilot ST 8002 pilothouse
Autopilot ST 6002 Flybridge
SPC-30 pilotdrive
windspeedmeter
Teak decks
Teakrailling not varnished
Washingmachine Indesit /dryer
Dishwasher Siemens
Yanmar wingengine 4JH5E
Extra fridge/flybridge



INTEGRITY
PEARL OF THE SEA

INTEGRITY

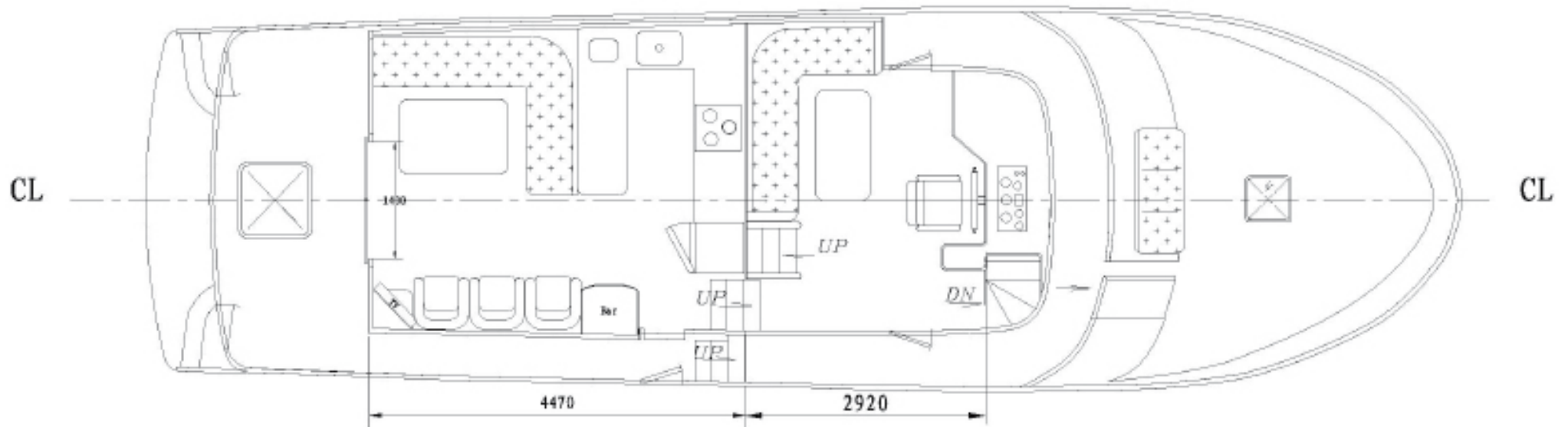
PEARL OF THE SEA



layout 550CE cabins/engine-room

INTEGRITY

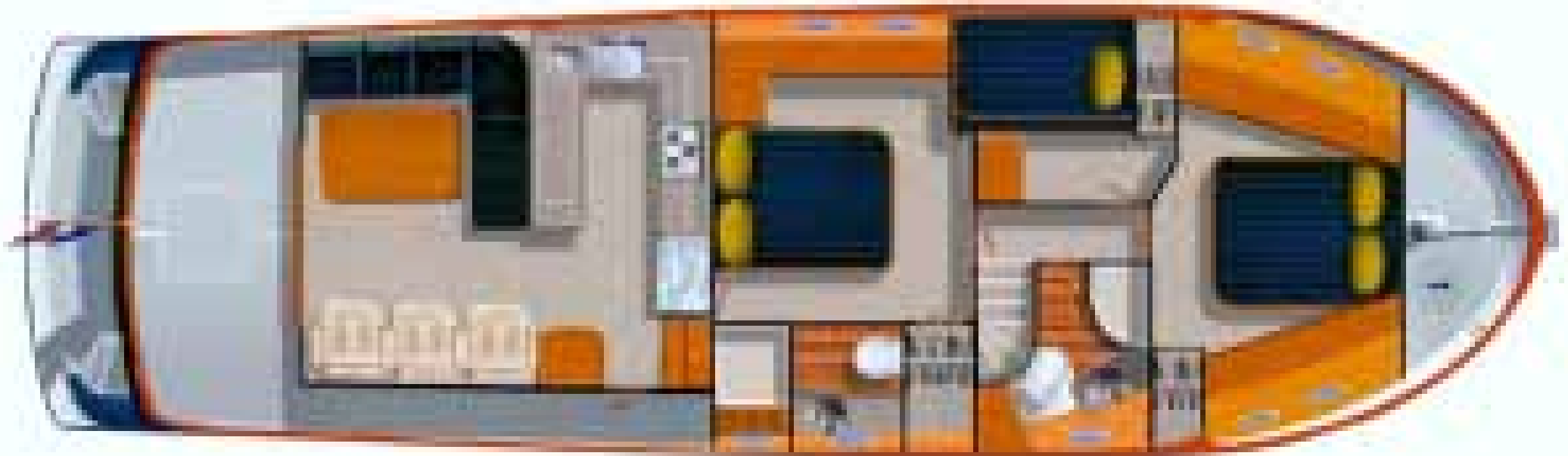
PEARL OF THE SEA



Layout 550CE Saloon/pilothouse

INTEGRITY

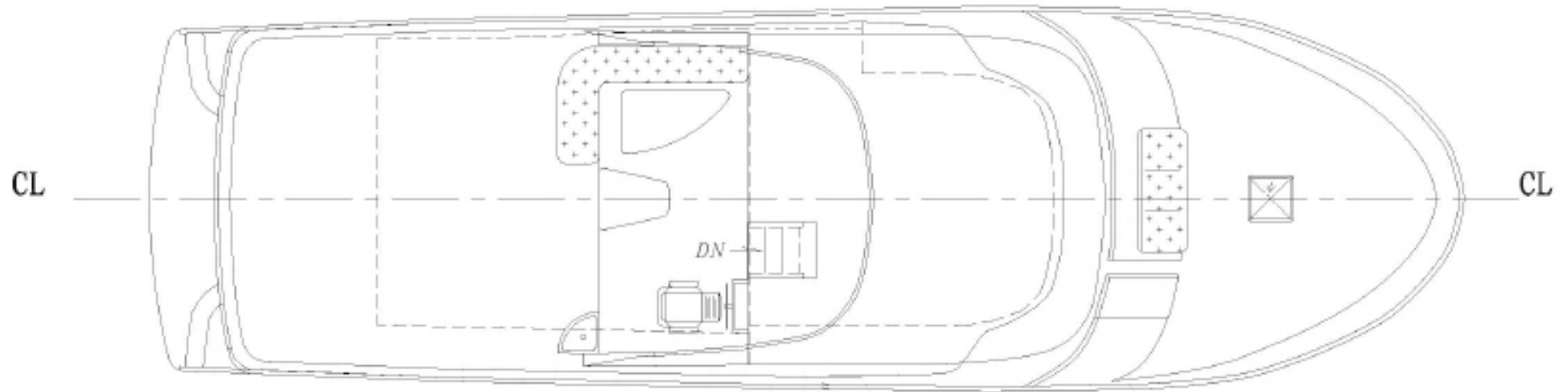
PEARL OF THE SEA



Layout 550CE Saloon and cabins

INTEGRITY

PEARL OF THE SEA



Layout 550CE Flybridge

INTEGRITY

PEARL OF THE SEA



*Layout 550CE Flybridge/
pilothouse*





Flybridge

INTEGRITY
PEARL OF THE SEA



Flybridge

INTEGRITY
PEARL OF THE SEA



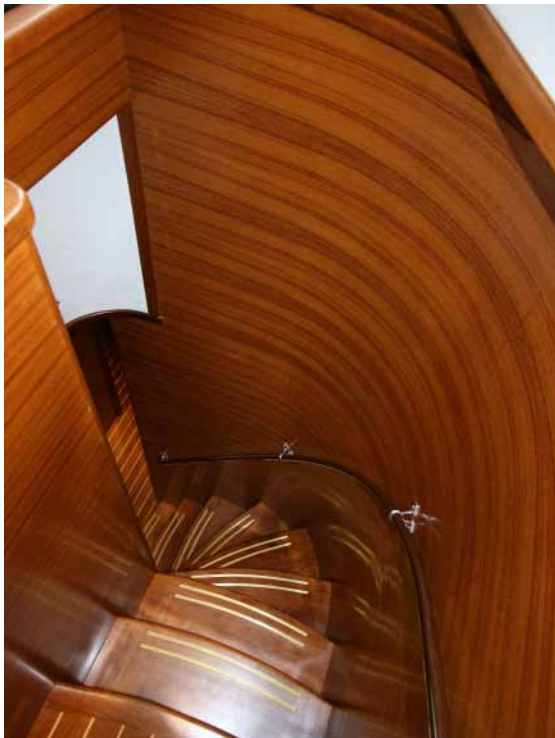
Pilothouse

INTEGRITY
PEARL OF THE SEA



Saloon

INTEGRITY
PEARL OF THE SEA







Options 550 CE

AGM Batteries

Airco,cruisair

Railingcloth flybridge

Corian,kitchen,heads

Deckwash,salt & fresh

Generator upgrade 13.5Kw

Sternthruster Maxpower,CT-165

Isotherm fridge flybridge

Leather sofa's saloon/pilothouse

Wingengine Yanmar 4JH5E

Stabilizers Naiad 174

Teakdecks

Teakrailing

Dishwasher Siemens

Washing machine Indesit

Raymarine navigation

Raymarine depthsounder DSM300

Raymarine camera 2x

Raymarine radar 4KW

Raymarine autopilot

Raymarine flybridge autopilot

Raymarine ST45 satelite TV

Raymarine GPS antenna

Raymarine windspeed meter

TV master bedroom

Oil changing pump

*** See also extra options in red printed**