



# INTEGRITY

*The ship for your life*

## INTEGRITY 470 CE-Plus



### SPECIFICATIONS

Length 14.50m  
Beam 4.54m  
Draft 1.20 m  
Displacement 16.000 kg

Fuel capacity 1700 ltr  
Water 950 ltr  
Holding tank 200 ltr  
Construction Hand laid fibreglass



Volvo D8 600 HP. Topspeed 22 knots  
Semi-displacement hull

340S - 380S - 380 F - 440S - 440F - 470XL - 340 SX - 380SX - 460SX  
**470CE-Plus** - 520SX-Plus

[www.integritytrawlers.nl](http://www.integritytrawlers.nl)

## Specifications 470CE Plus

Length	14.50
Beam	4.54
Draft	1,20
Hull material	GRP
Engine	Volvo D8 600 HP,ZF gearbox
Max Speed	22 knots , cruising 16 kn.
Propulsion	Shaft drive
Thrusters	Bow & Stern 12V 6HP each
Genset	7.5Kw
Fuel	1700 ltr
Water	950ltr
Galley	Induction (2 burner) Microwave / 1 refrigerator 140L
Hotwater system	60 ltr
Seating	L shaped saloon lounge with timber table,opening roof hatch
Accommodation	Master Cabin forward,roof hatch , ensuite bathroom Guest cabin midship,twin beds can covert to Queen berth ensuite bathroom
Berths	4 in 2 cabins
Toilets	2 , 2 showers, shower stall with glass door
Bilge pumps	3x electric and 3 manual
Electrics	Victron charger/inverter 3000 12V House batteries,Engine batterie,Genset batterie Bow & Stern thruster batterie All-in GRP boxes
Deck gear	Anchor locker,2 hatches on deck SS rail (316),flag staff SS cleats 8x Escape deck hatch Deck lights Fuel fillers on side decks Windows in FRP frames(tinted) ,Portguese style frontwindow Rub rail with SS insert / swim ladder SS Sliding door to FRP deck Wash down tap seawater & Fresh water 20Kgs Anchor,60 ntr chain &electric winch 24V

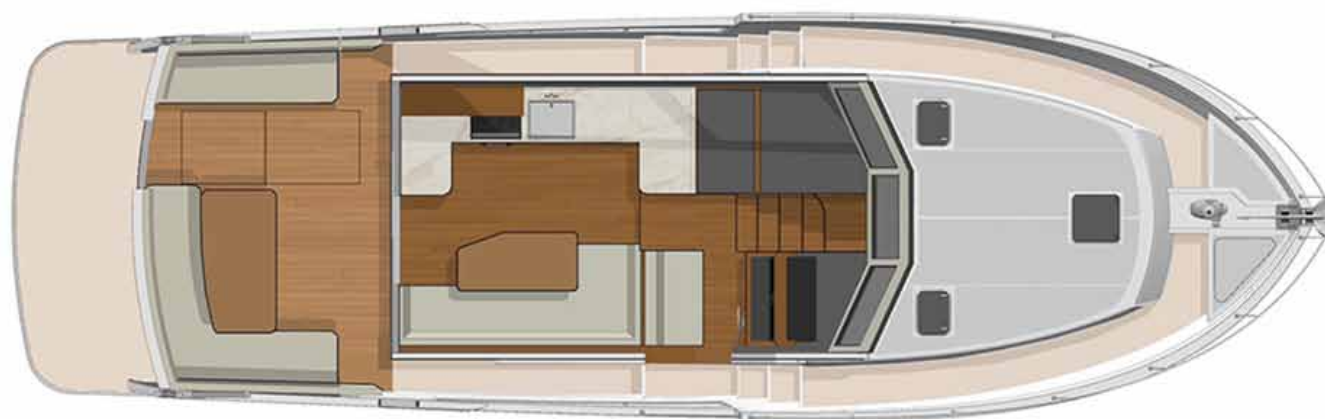
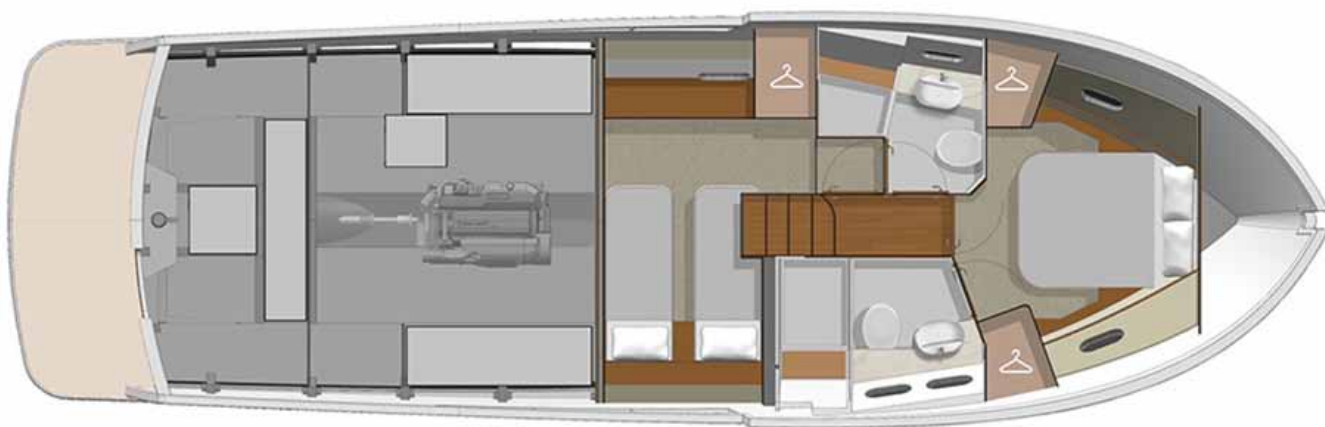
Special other options on request,like heating,Airco, electronics Raymarine,Garmin

teakdeck,sliding roof,stabilizer system,double fuel filters,TV,Stereo Fusion,

double glazing,sliding door to rearcockpit, LED floorlights

Twin engine,bringhome engine,





## New Integrity 470 CE PLUS

Introducing the new Integrity 470CE PLUS Coastal Explorer. The new PLUS range represents the next step in the evolution of Integrity's tried and tested motor yacht design, with all the style, safety, comfort and reliability that are hallmarks of Integrity, and now with a whole new pace.

The new Integrity SX PLUS range features the styling enhancements of the popular Integrity SX model with the addition of a higher cruising speed for those seeking greater performance.

The all-new CE or Coastal Express features a new contemporary look and feel to appeal to a new generation of boating families. Both the SX PLUS and CE PLUS range maintain the core Integrity DNA of spacious entertainers' zones, covered cockpit, side walkways for safe, easy access, and now, owners can opt for genuine higher speed cruising. If you're looking for a perfect weekender or an adventurous long-range cruiser, and with a size to suit any boating lifestyle, you're sure to find your fit with Integrity.



The Integrity 470CE Plus is the first model in the new Coastal Express range delivering faster cruising speeds from the new innovative and silent Integrity 'Plus' planing hull design, which maximises efficiency and minimises water slap whilst at rest, providing an unparalleled live aboard experience.

**INTEGRITY**  
PEARL OF THE SEA